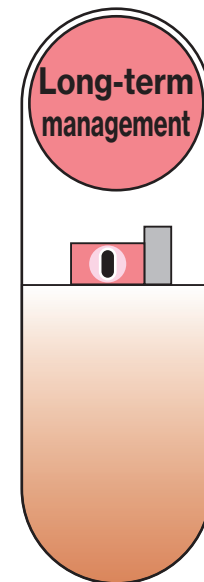
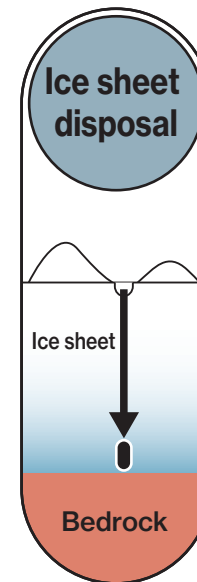
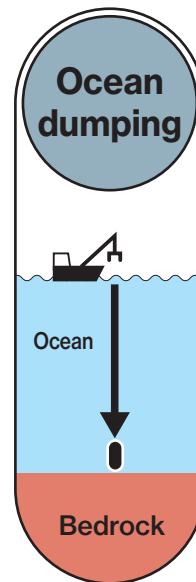
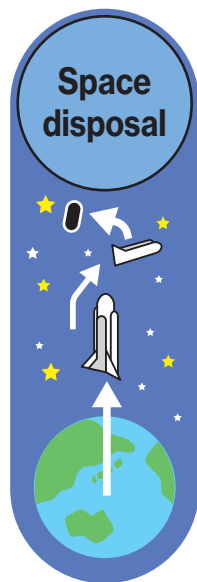
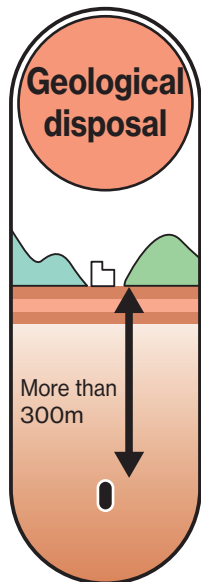


# Examination of Methods for Disposing of High-Level Radioactive Waste

Given the difficulties of people managing wastes into perpetuity and not burdening future generations with monitoring them, methods have been examined that would allow safe disposal without the need for human management.

- Disposal in geological formations are considered highly feasible, given the numerous examples of underground resources already being maintained for a long time.
- With disposal in space, problems exist in reliability of launching technologies.
- Ocean dumping, in which waste is discarded in deep parts of the sea, is banned under the London Convention.
- Disposal in polar ice is banned under the Antarctic Treaty. Further, features of the ice sheet are not fully known.



- Use the properties inherent to geological formation to lock up materials

- Problems with reliability of launch technologies

- Banned by London Convention regulating ocean dumping

- Banned by Antarctic Treaty
- Features of ice sheet not fully known

- Human management in perpetuity difficult
- Burdens future generations with monitoring