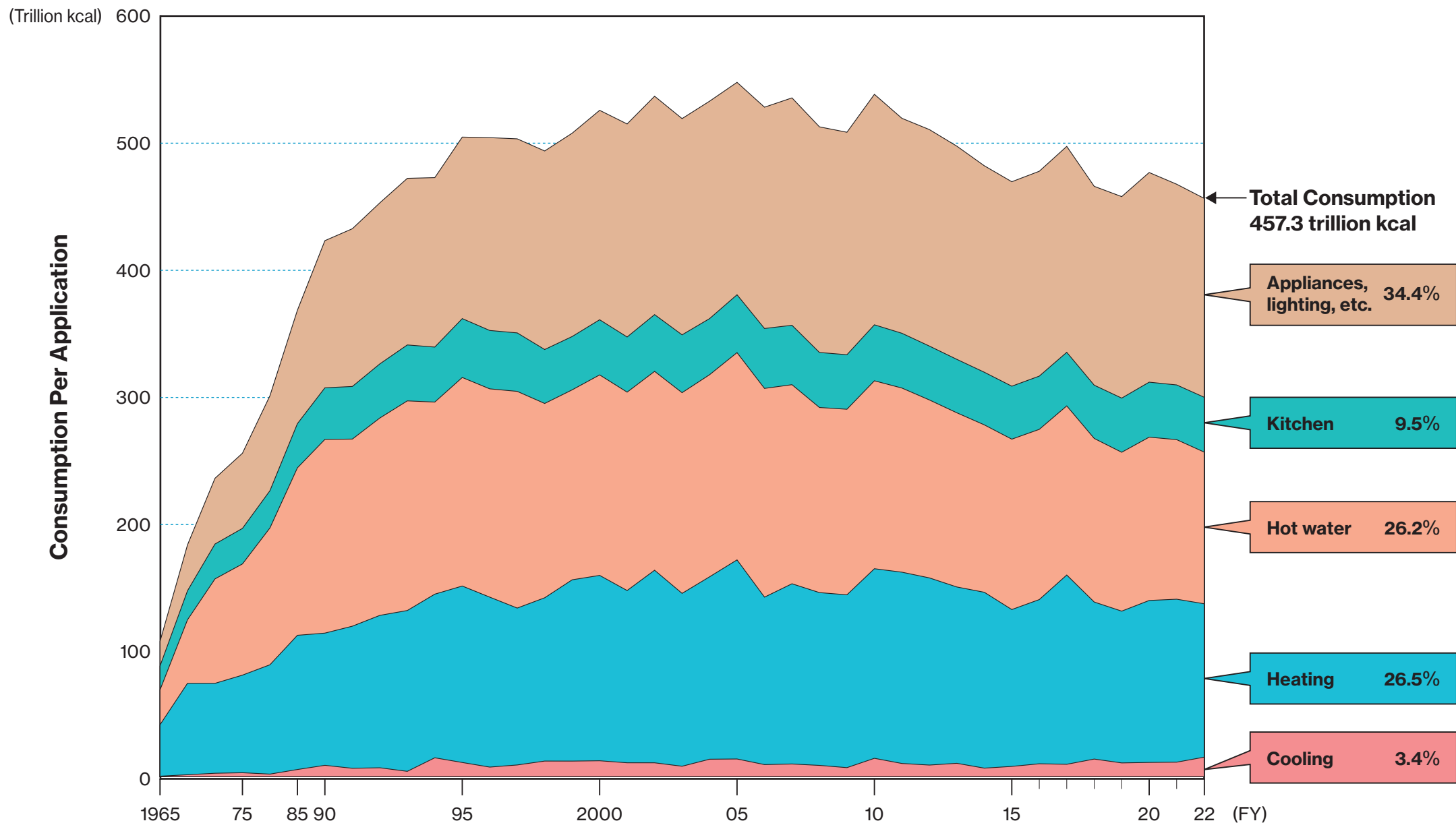


Household Energy Consumption Per Application



(Note) The category "Appliances, lightning, etc." includes washing machines, clothes dryers, futon dryers, TVs, VCRs, stereos, CD players, DVD players, record players, vacuum cleaners, PCs and electric bidet toilets.

1-2-12

© JAERO

Source: The Institute of Energy Economics, Japan, 2024 EDMC Handbook of Energy and Economic Statistics in Japan