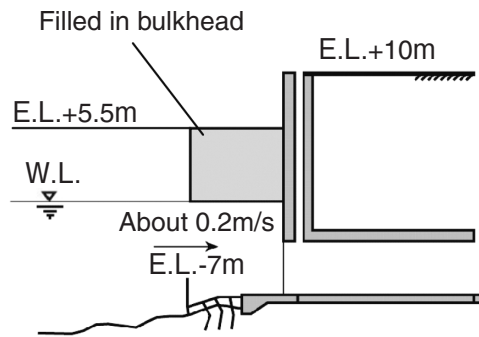
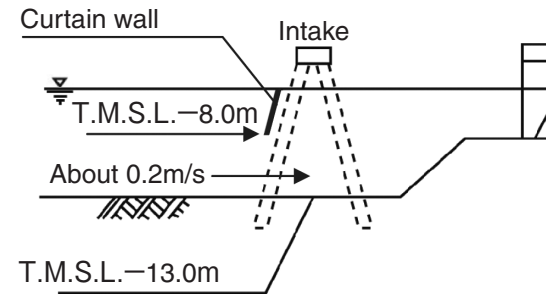


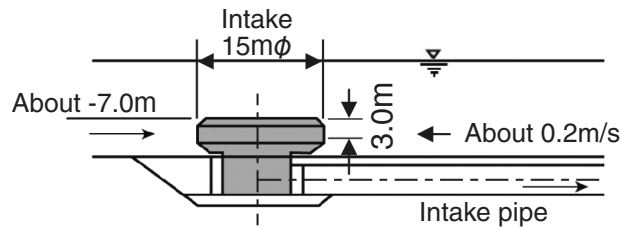
Overview of Water Intake Systems



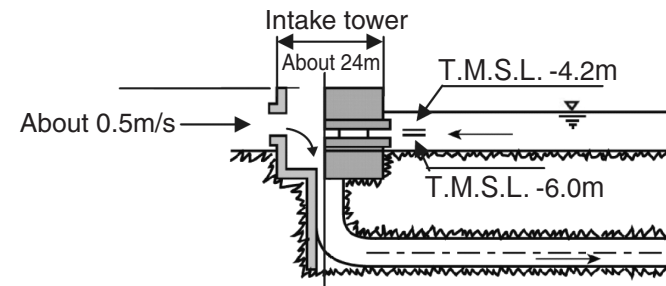
Surface water intake system (Tomari Nuclear Power Station, Units 1, 2)



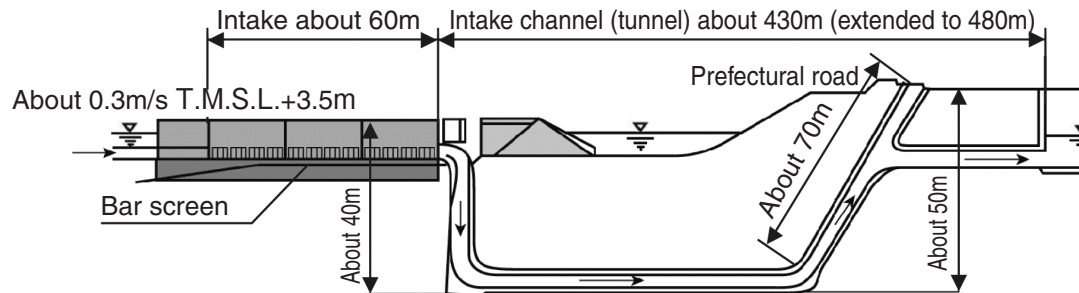
Curtain wall-type deep water intake system (Tomari Nuclear Power Station, Units 1 to 4)



Intake pipe-type deep water intake system (Yanai Power Plant, Units 1, 2)



Intake tower-type deep water intake system (Hamaoka Nuclear Power Station, Unit 4)



Porous dike-type deep water intake system (Shika Nuclear Power Plant, Unit 1)